

TECHNICAL MANUAL
ORGANIZATIONAL, DIRECT SUPPORT, AND
GENERAL SUPPORT
MAINTENANCE REPAIR PARTS AND
SPECIAL TOOLS LISTS
(INCLUDING DEPOT MAINTENANCE REPAIR
PARTS AND SPECIAL TOOLS)
FOR
CONVERTER, TELEPHONE SIGNAL
CV-1919/G
(NSN 5805-00-910-8848)

HEADQUARTERS, DEPARTMENT OF THE ARMY

JULY 1978

TECHNICAL MANUAL }
 No. 11-5805-689-24P }

HEADQUARTERS
 DEPARTMENT OF THE ARMY
 WASHINGTON, DC, 17 July 1978

**ORGANIZATIONAL, DIRECT SUPPORT,
 AND GENERAL SUPPORT
 MAINTENANCE REPAIR PARTS
 AND SPECIAL TOOLS LISTS
 (INCLUDING DEPOT MAINTENANCE REPAIR
 PARTS AND SPECIAL TOOLS)
 FOR
 CONVERTER, TELEPHONE SIGNAL CV-1919/G
 (NSN 5805-00-910-8848)**

REPORTING OF ERRORS

You can improve this manual by recommending improvements using DA Form 2028 located in the back of the manual. Simply tear out the self addressed form, fill it out as shown on the sample, fold it where shown, and drop it in the mail.

If there are no blank Form 2028-2 in the back of your manual, use the standard DA Form 2028 (Recommended Changes to Publications and Blank Forms) and forward to the Commander, US Army Communications and Electronics Materiel Readiness Command, ATTN: DRSEL-MA-Q, Fort Monmouth, New Jersey 07703.

In either case a reply will be furnished direct to you.

Table of Contents

		Page	Ilus Figure
SECTION	I. Introduction.....	1	
	II. Repair parts list.....	5	
Group	00 Converter, Telephone signal CV-1919/G.....	5	1
	01 Chassis.....	7	2
	02 Channel module.....	9	3
	0201 Channel module circuit card.....	13	4
	03 Common module.....	17	5,6
	0301 Common module circuit card.....	25	7
	0302 Oscillator assembly.....	27	8,9
	0303 Keypad assembly (No parts authorized)		
SECTION	III. Special tools list (Not applicable)		
	IV. National stock number and parts number index.....	30	

SECTION I

INTRODUCTION

1. Scope

This manual lists spares and repair parts: special tools; special test, measurement, and diagnostic equipment (TMDE), and other special support equipment required for performance of organizational, direct support, and general support maintenance of the CV-19191/G. It authorizes the requisitioning and issue of spares and repair parts as indicated by the source and maintenance codes.

2. General

This Repair Parts and Special Tools List is divided into the following sections:

a. Section II. Repair Parts List. A list of spares and repair parts authorized for use in the performance of maintenance. The list also includes parts which must be removed for replacement of the authorized parts. Parts lists are composed of functional groups in numeric sequence, with the parts in each group listed in figure and item number sequence.

b. Section III. Special Tools List. Not applicable.

c. Section IV. National Stock Number and Part Number Index. A list, in National item identification number (NIIN) sequence, of all National stock numbers (NSN) appearing in the listings, followed by a list, in alphameric sequence, of all part numbers appearing in the listings. National stock numbers and part numbers are cross-referenced to each illustration figure and item number appearance.

3. Explanation of Columns

a. Illustration. This column is divided as follows:

(1) *Figure number.* Indicates the figure number of the illustration on which the item is shown.

(2) *Item number.* The number used to identify item called out in the illustration.

b. Source, Maintenance, and Recoverability (SMR) Codes.

(1) *Source code.* Source codes indicate the manner of acquiring support items for maintenance, repair, or overhaul of end items. Source codes are entered in the first and second positions of the Uniform SMR Code format as follows:

Code	Definition
------	------------

PA—Item procured and stocked for anticipated or known usage.	
--	--

Code

Definition

XA—Item is not procured or stocked because the requirements for the item will result in the replacement of the next higher assembly.	
--	--

XD—A support item that is not stocked. When required, item will be procured through normal supply channels.	
---	--

NOTE

Cannibalization or salvage may be used as a source of supply for any items source coded above except those coded XA and aircraft support items as restricted by AR 700-42.

(2) *Maintenance code.* Maintenance codes are assigned to indicate the levels of maintenance authorized to USE and REPAIR support items. The maintenance codes are entered in the third and fourth positions of the Uniform SMR Code format as follows:

(a) The maintenance code entered in the third position will indicate the lowest maintenance level authorized to remove, replace, and use the support item. The maintenance code entered in the third position will indicate one of the following levels of maintenance:

Code	Application/Explanation
------	-------------------------

O—Support item is removed, replaced, used at the organizational level.	
--	--

F—Support item is removed, replaced, used at the direct support level.	
--	--

D—Support items that are removed, replaced, used at depot, mobile depot, specialized repair activity only.	
--	--

(b) The maintenance code entered in the fourth position indicates whether the item is to be repaired and identifies the lowest maintenance level with the capability to perform complete repair (i.e., all authorized maintenance functions). This position will contain one of the following maintenance codes:

Code	Application/Explanation
------	-------------------------

D—The lowest maintenance level capable of complete repair of the support item is the depot level.	
---	--

Z—Nonreparable. No repair is authorized.	
--	--

(3) *Recoverability code.* Recoverability codes are assigned to support items to indicate the disposition action on unserviceable items. The

recoverability code is entered in the fifth position of the Uniform SMR Code format as follows:

*Recoverability
codes*

Definition

Z-Nonreparable item. When unserviceable, condemn and dispose at the level indicated in position 3.

D - Reparable item. When beyond lower level repair capability, return to depot. Condemnation and disposal not authorized below depot level.

L- Reparable item. Repair, condemnation, and disposal not authorized below depot/specialized repair activity level.

c. National Stock Number. Indicates the National stock number assigned to the item and will be used for requisitioning purposes.

d. Part Number. Indicates the primary number used by the manufacturer (individual, company, firm, corporation, or Government activity), which controls the design and characteristics of the item by means of its engineering drawings, specifications, standards, and inspection requirements to identify an item or range of items.

NOTE

When a stock numbered item is requisitioned, the repair part received may have a different part number than the part being replaced.

e. Federal Supply Code for Manufacturer (FSCM). The FSCM is a 5-digit numeric code listed in SB 708-42 which is used to identify the manufacturer, distributor, or Government agency, etc.

f. Description. Indicates the Federal item name and, if required, a minimum description to identify the item.

g. Unit of Measure (U/M). Indicates the standard of the basic quantity of the listed item as used in performing the actual maintenance function. This measure is expressed by a two-character alphabetical abbreviation (e.g., ea in pr, etc). When the unit of measure differs from the unit of issue, the

lowest unit of issue that will satisfy the required units of measure will be requisitioned.

h. Quantity Incorporated in Unit. Indicates the quantity of the item used in the breakout shown on the illustration figure, which is prepared for a functional group, subfunctional group, or an assembly.

4. Special Information

The following publications pertain to the CV-1919/G and its components:
TM 11-5805-689-14, Telephone Signal CV-1919G

5. How to Locate Repair Parts

a. When National stock number or part number is unknown.

(1) *First.* Using the table of contents, determine the functional group within which the item belongs. This is necessary since illustrations are prepared for functional groups and listings are divided into the same groups.

(2) *Second.* Find the illustration covering the functional group to which the item belongs.

(3) *Third.* Identify the item on the illustration and note the illustration figure and item number of the item.

(4) *Fourth.* Using the Repair Parts Listing, find the figure and item number noted on the illustration.

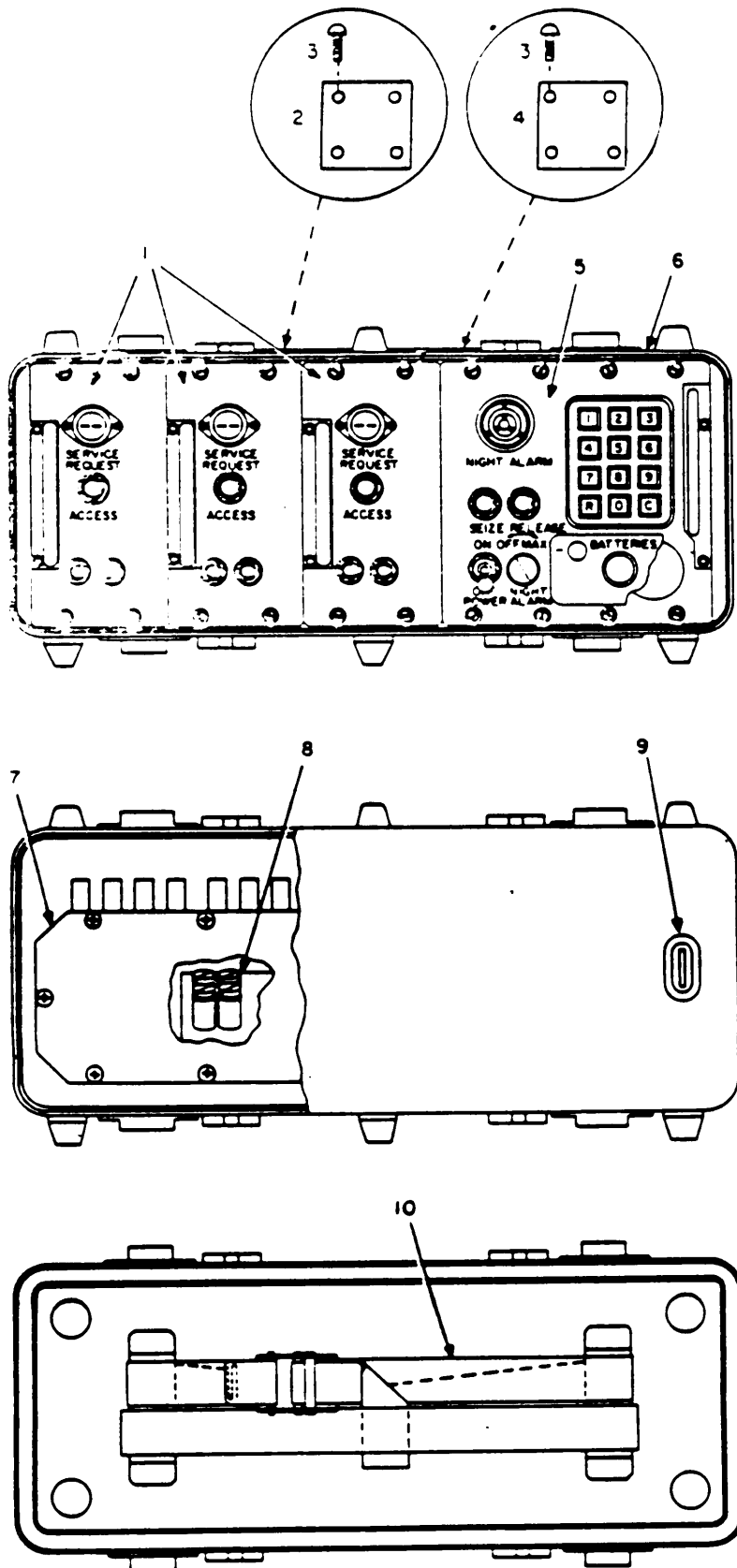
b. When National stock number or part number is known.

(1) *First.* Using the Index of National Stock Numbers and Part Numbers, find the pertinent National stock number or part number. This index is in NIIN sequence followed by a list of part numbers in alphameric sequence, cross-referenced to the illustration figure number and item number.

(2) *Second.* After finding the figure and item number, locate the figure and item number in the repair parts list.

6. Abbreviations

Not applicable

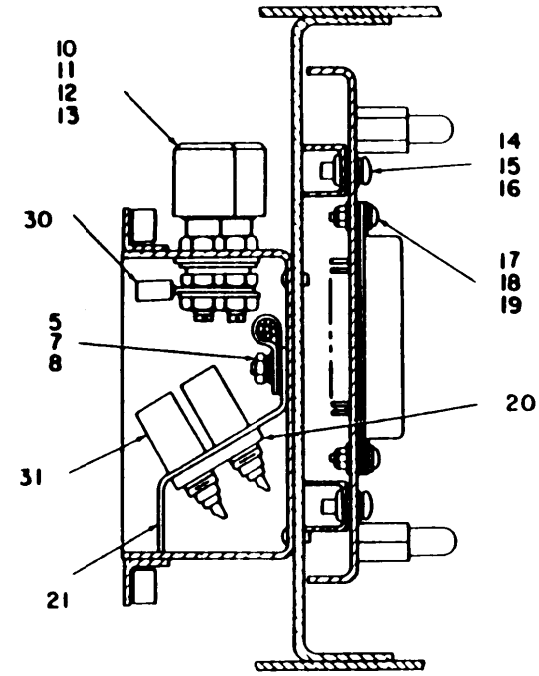
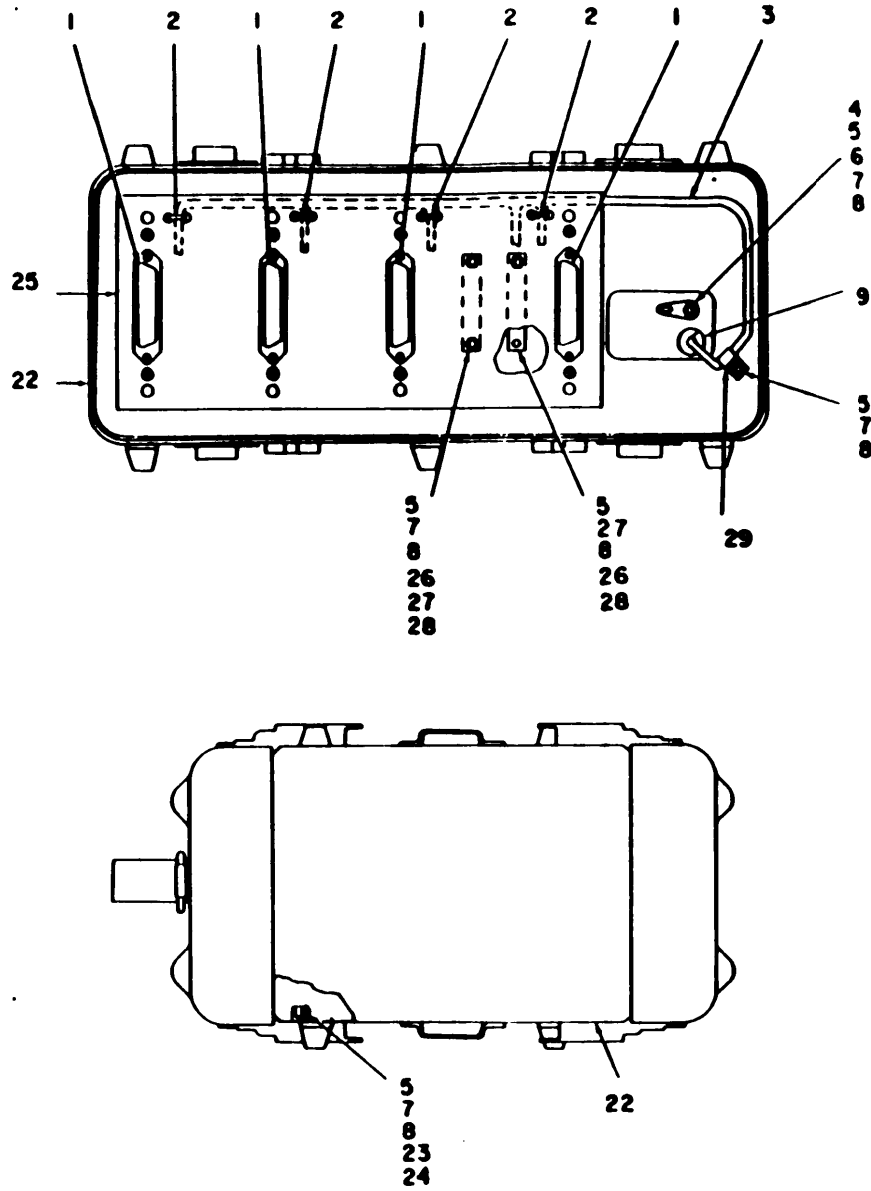


NOTE: PREFIX ALL REFERENCE DESIGNATIONS WITH AI

EL 3LM001

Figure 1. Converter, Telephone Signal CV-1919/G.

ILLUSTRATION		NATIONAL STOCK NUMBER			PART NUMBER		DESCRIPTION	QUANTITY	UNIT
FIG NO	ITEM NO	SAH CODE	NUMBER	NUMBER	ASCM				
GROUP 00 CONVERTER, TELEPHONE SIGNAL									
CV-1919/G									
1	1	PA000	5805-00-174-3523	111307	44038	CHANNEL MODULE	EA	3	
1	2	AD022		111300	44038	PLATE IDENTIFICATION	EA	1	
1	3	PAF22	5320-00-117-0815	MS20470AD3-4	90906	RIVET SGLID	EA	8	
1	4	XD022		111351	44038	PLATE INSTRUCTION	EA	1	
1	5	PA000	5805-00-174-3509	111308	44038	COMMON MODULE	EA	1	
1	6	AA022		111301	44038	CASE ASSEMBLY	EA	1	
1	7	AD022		111338	44038	COVER ARRESTOR ENCLOSURE	EA	1	
1	8	PA022	5920-00-031-5006	PC338-4	27494	PROTECTOR TELEPHONE	EA	10	
1	9	PA022	5925-00-100-8719	111344	44038	GROMMET RUBBER	EA	1	
1	10	PA022	5340-00-173-8118	NAS1213410J66	80205	STRAP WEBBING	EA	1	



NOTE: PREFIX ALL REFERENCE DESIGNATIONS WITH AIAI

EL3LM002

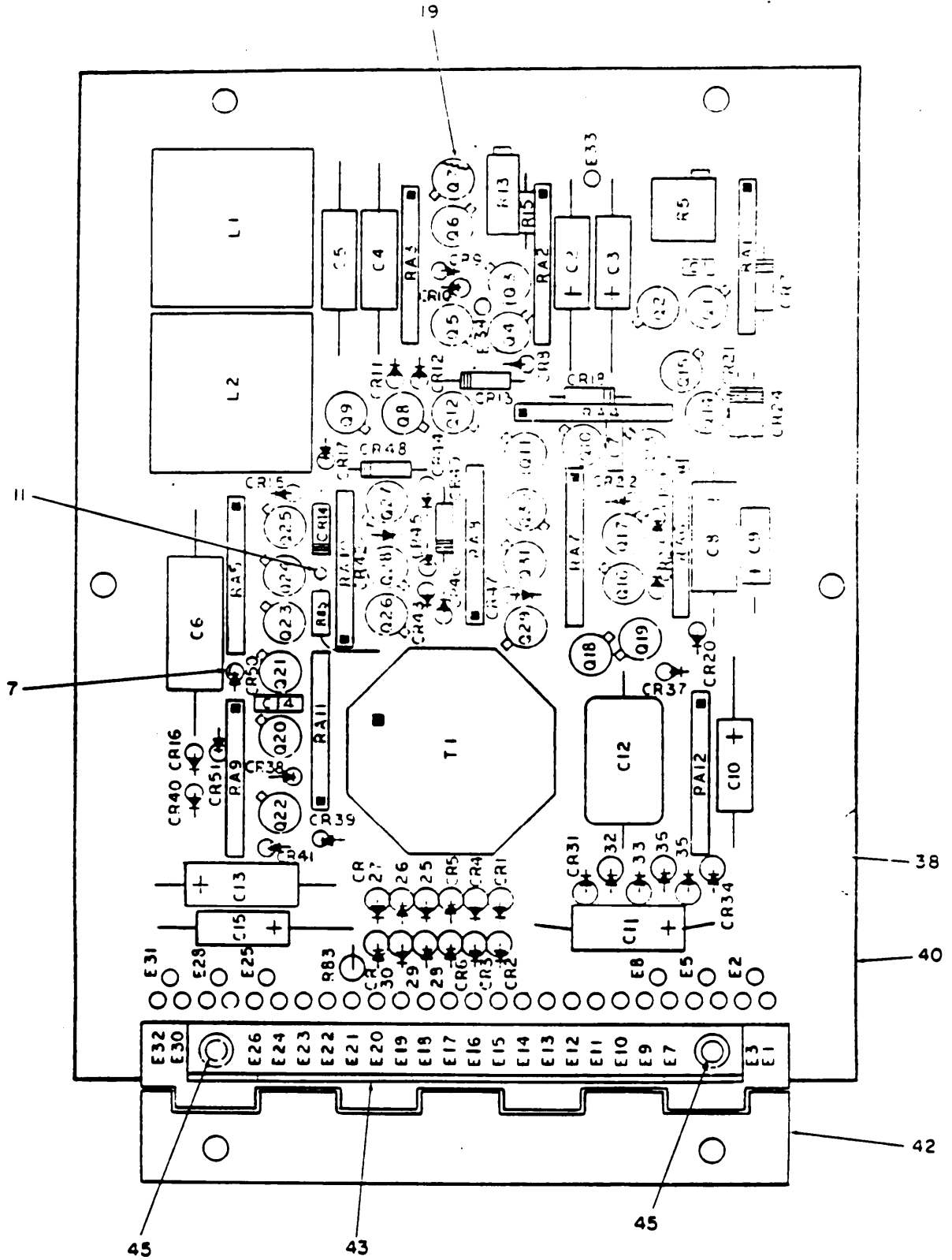
Figure 2. Chassis.

ILLUSTRATION					DESCRIPTION		
(B) FIG NO	(D) ITEM NO	SMR CODE	NATIONAL STOCK NUMBER	PART NUMBER	FSCM		
GROUP 01 CHASSIS							
2	1	PAFZZ	5935-00-578-3302	57-2J30J	22600	CONNECTOR HERMETICALLY SECT	EA
2	2	PAFZZ	5975-00-727-5153	MS3367-4-4	96906	STRAP TIE DOWN	EA
2	3	XDFZZ		111312	44038	WIRING HARNESS	EA
2	4	PAFZZ	5305-00-054-6652	MS51757-28	96906	SCREW MACHINE PAN HEAD	EA
2	5	PAFZZ	5310-00-722-5598	MS15795-005	96906	WASHER FLAT	EA
2	6	PAFZZ	5940-00-615-8958	2104-06-02	78189	TERMINAL LUG	EA
2	7	PAFZZ	5310-00-929-6395	MS35338-136	96906	WASHER LOCK	EA
2	8	PAFZZ	5310-00-934-9701	MS35649-264	96906	NUT PLAIN HEXAGON	EA
2	9	PAFZZ	5325-00-263-6632	MS35449-6	96906	GROMMET RUBBER	EA
2	10	XDFZZ		9766-145	72625	INSULATOR WASHER	EA
2	11	XDFZZ		9766-143	44038	INSULATOR BUSHING	EA
2	12	PAFZZ	5940-00-727-4954	08-2204-0110	91662	POST BINDING	EA
2	13	PAFZZ	5330-00-108-1152	9769-5	72325	PACKING PREFORMED	EA
2	14	PAFZZ	5310-00-800-5970	MS15795-007	96906	WASHER FLAT	EA
2	15	PAFZZ	5310-00-933-3119	MS35333-137	96906	WASHER LOCK	EA
2	16	PAFZZ	5305-00-054-6671	MS51957-40	96906	SCREW MACHINE PAN HEAD	EA
2	17	PAFZZ	5310-00-962-5100	7441430	72402	NUT SELF-LOCKING HEXAGON	EA
2	18	PAFZZ	5305-00-109-0230	114015	44038	SCREW MACHINE	EA
2	19	PAFZZ	5310-00-849-4145	MS9321-04	96906	WASHER FLAT	EA
2	20	PAFZZ	5310-00-102-5282	112540	44038	NUT PLATE	EA
2	21	XDFZZ		111334	44038	BRACKET DOUBLE ANGLE	EA
2	22	XAFZZ		111302	44038	CASE	EA
2	23	XDFZZ		111332	44038	NUT STRIP	EA
2	24	PAFZZ	5305-00-066-7328	MS24693027	96906	SCREW MACHINE	EA
2	25	XDFZZ		111333	44038	PLATE MOUNTING CONNECTOR	EA
2	26	XDFZZ		352-11-04-001	71785	TERMINAL GUARD	EA
2	27	PAFZZ	5305-00-054-5654	MS51757-16	96906	SCREW MACHINE PAN HEAD	EA
2	28	PAFZZ	5940-00-983-7091	323J11	00779	TERMINAL LUG	EA
2	29	PAFZZ	5340-00-950-4436	3-16-47	45437	CLAMP LOOP	EA
2	30	PAFZZ	5940-00-813-6698	MS25030-101	96906	TERMINAL LUG	EA
2	31	PAFZZ	6250-00-025-1960	405-70-4	81590	LAMP HOLDER	EA

ILLUSTRATION						DESCRIPTION		
AI FIG NO	DI ITEM NO	SMR CODE	NATIONAL STOCK NUMBER	PART NUMBER	FSCN		UN IN UNIT	
GROUP 02 CHANNEL MODULE								
3	1	PAFZZ	5310-00-199-7035	MS24679-21	96906	NUT PLAIN CAP	EA	2
3	2	PAFZZ	5305-00-969-6445	MS24693C25	96906	SCREW MACHINE	EA	6
3	3	PAFZZ	5305-00-433-4182	Y9-3	00141	SCREW MACHINE	EA	4
3	4	PAFZZ	5310-00-722-5948	MS15795-805	96906	WASHER FLAT	EA	20
3	5	XDFZZ		117031	44038	WASHER FLAT	EA	4
3	6	PAFZZ	5310-00-143-9827	117139	44038	WASHER RECESSED	EA	4
3	7	PAFZZ	5305-00-458-2418	MS24693C26	96906	SCREW MACHINE	EA	6
3	8	PAFZZ	5950-00-100-1158	110771	44038	TRANSFORMER ALDIO	EA	2
3	9	PAFZZ	5305-00-368-7327	MS24693C26	96906	SCREW MACHINE	EA	2
3	10	PAFZZ	5310-00-487-6913	MS21044C06	96906	NUT SELF-LOCKING HEXAGON	EA	2
3	11	PAFZZ	5340-00-456-4436	3-16-4T	45487	CLAMP LOOP	EA	2
3	12	PAFZZ	5310-00-334-9761	MS39649-264	96906	NUT PLAIN HEXAGON	EA	4
3	13	PAFZZ	5310-00-929-6395	MS35339-136	96906	WASHER LOCK	EA	4
3	14	PAFZZ	5305-00-058-6651	MS1457-27	96906	SCREW MACHINE PAN HEAD	EA	2
3	15	PAFOL	5305-00-174-3508	111304	44038	CIRCUIT CARD ASSEMBLY	EA	1
3	16	PAFZZ	5310-00-434-2013	MS35649-224	96906	NUT PLAIN HEXAGON	EA	2
3	17	PAFZZ	5310-00-595-6761	MS15795-802	96906	WASHER FLAT	EA	2
3	18	PAFZZ	5310-00-428-2640	MS35336-134	96906	WASHER LOCK	EA	2
3	19	PAFZZ	5305-00-058-6638	MS1457-43	96906	SCREW MACHINE PAN HEAD	EA	2
3	20	XDFZZ		116975	44038	METAINEK JACK	EA	1
3	21	PAFZZ	5310-00-982-4999	MS21044C04	96906	NUT SELF-LOCKING HEXAGON	EA	2
3	22	PAFZZ	5310-00-595-6211	MS15795-803	96906	WASHER FLAT	EA	2
3	23	PAFZZ	5305-00-068-6605	MS24693C6	96906	SCREW MACHINE	EA	2
3	24	XDFZZ		116976	44038	SUPPORT JACK	EA	1
3	25	PAFZZ	5905-00-823-9649	RW81U6040F	81349	RESISTOR FIXED WIRE WOUND	EA	1
3	26	PAFZZ	5305-00-058-6662	MS1457-38	96906	SCREW MACHINE PAN HEAD	EA	1
3	27	XDFZZ		111310	44038	WIRING HARNESS	EA	1
3	28	PAFZZ	5475-00-727-5153	MS3367-4-9	96906	STRAP TIEDOWN	EA	4
3	29	PAFZZ	5310-00-456-6090	CA0682564K	81349	CAPACITOR FIXED CERAMIC	EA	1
3	30	PAFZZ	5310-00-462-5160	74NFM36	72462	NUT SELF-LOCKING HEXAGON	EA	2
3	31	PAFZZ	5310-00-899-9145	MS5321-04	96906	WASHER FLAT	EA	6
3	32	PAFZZ	5305-00-109-0280	114615	44038	SCREW MACHINE	EA	2
3	33	PAFZZ	5310-00-100-1162	114299	44038	CAPACITOR FIXED	EA	2
3	34	PAFZZ	5940-00-819-8558	2104-06-02	78189	TERMINAL LUG	EA	1
3	35	XDFZZ		111323	44038	SPACER SLEEVE	EA	4
3	36	PAFZZ	5940-00-259-6456	3648-2	71279	TERMINAL STUD	EA	5
3	37	PAFZZ	5935-00-764-2135	M39024-10-06	81349	JACK TIP	EA	1
3	38	PAFZZ	5935-00-702-4199	M39024-10-02	81349	JACK TIP	EA	1
3	39	PAFZZ	5935-00-813-5874	M39024-10-06	81349	JACK TIP	EA	1

SECTION II

ILLUSTRATION		NATIONAL STOCK NUMBER		PART NUMBER	PSCM	DESCRIPTION	UN	QTY
(1) FIG NO	(2) ITEM NO SMR CODE	(3)	(4)	(5)	(6)	(7) UN	(8) QTY	(9) UNIT
3	40 PAFZZ	5935-00-766-4232	M39024-10-04	81349	JACK TIP	EA	1	
3	41 PAFZZ	5935-00-733-6387	M39024-10-05	81349	JACK TIP	EA	1	
3	42 PAFZZ	5935-00-776-4617	M39024-10-07	81349	JACK TIP	EA	1	
3	43 PAFZZ	5935-00-102-7999	M39024-10-10	81349	JACK TIP	EA	1	
3	44 PAFZZ	5935-00-931-1967	M39024-10-09	81349	JACK TIP	EA	1	
3	45 PAFZZ	5935-00-728-4514	M39024-10-01	81349	JACK TIP	EA	1	
3	46 PAFZZ	5935-00-127-2454	114608	44038	JACK TELEPHONE	EA	2	
3	47 PAFZZ	5970-00-099-5694	114685	44038	INSULATOR BUSHING	EA	4	
3	48 XDFZZ		111352	44038	SPACER HANDLE	EA	1	
3	49 XDFZZ		110797	44038	HANDLE BOW	EA	1	
3	50 PAFZZ	5805-00-094-6537	P2-126	45925	INDICATOR SIGNAL	EA	1	
3	51 PAFZZ	5930-00-100-1174	114648	44038	SWITCH PUSH	EA	1	
3	52 XDFZZ		111349	44038	COVER CHANNEL MODULE	EA	1	
3	53 PAFZZ	5305-00-066-7326	M524693C24	96906	SCREW MACHINE	EA	1	
3	54 PAFZZ	5305-00-054-6652	M531957-28	96906	SCREW MACHINE PAN HEAD	EA	4	
3	55 XDFZZ		111313	44038	FRAME CHANNEL MODULE	EA	1	
3	56 XDFZZ		111348	44038	BRACKET MOUNTING	EA	1	
3	57 PAFZZ	5935-00-027-6917	57-1036J	02660	CONNECTOR RECEPTACLE ELECT	EA	1	



NOTE PREFIX ALL REFERENCE DESIGNATIONS WITH AIA2AI

EL3LM004

Figure 4. Channel Module Circuit Card (Sheet 1 of 2).

REF DES	ITEM NO.	REF DES	ITEM NO.	REF DES	ITEM NO.	REF DES	ITEM NO.
C1	27	CR24	3	E11	20	RA8	13
C2	25	CR25	39	E12	20	RA9	5
C3	25	CR26	39	E13	20	RA10	12
C4	46	CR27	39	E14	20	RA11	8
C5	46	CR28	39	E15	20	RA12	37
C6	4	CR29	39	E16	20	Q1	9
C7	29	CR30	39	E17	20	Q2	9
C8	32	CR31	39	E18	20	Q3	9
C9	31	CR32	39	E19	20	Q4	9
C10	36	CR33	39	E20	20	Q5	18
C11	2	CR34	39	E21	20	Q6	14
C12	35	CR35	39	E22	20	Q7	14
C13	2	CR36	39	E23	20	Q8	14
C14	6	CR37	3	E24	20	Q9	14
C15	1	CR38	3	E25	20	Q10	18
CR1	39	CR39	3	E26	20	Q11	14
CR2	39	CR40	3	E27	20	Q12	14
CR3	39	CR41	3	E28	20	Q13	18
CR4	39	CR42	3	E29	20	Q14	18
CR5	39	CR43	3	E30	20	Q15	18
CR6	39	CR44	3	E31	20	Q16	18
CR7	3	CR45	3	E32	20	Q17	18
CR8	3	CR46	3	E33	20	Q18	9
CR9	3	CR47	3	E34	20	Q19	14
CR10	3	CR48	3	L1	16	Q20	18
CR11	3	CR49	3	L2	15	Q21	18
CR12	3	CR50	3	R5	26	Q22	18
CR13	17	CR51	3	R15	22	Q23	9
CR14	3	E1	20	R83	44	Q24	9
CR15	3	E2	20	R85	10	Q25	9
CR16	3	E3	20	R13	21	Q26	9
CR17	3	E4	20	RA1	28	Q27	18
CR18	3	E5	20	RA2	23	Q28	18
CR19	3	E6	20	RA3	47	Q29	18
CR20	3	E7	20	RA4	24	Q30	18
CR21	3	E8	20	RA5	41	Q31	14
CR22	3	E9	20	RA6	33	TI	34
CR23	3	E10	20	RA7	30		

EL3LM010

Figure 4. Channel Module Circuit Card (Sheet 1 of 2).

ILLUSTRATION		NATIONAL STOCK NUMBER		PART NUMBER	FSCM	DESCRIPTION	QTY INC	UNIT
(1) FIG NO	(2) IBI ITEM NO	(3) SHR CODE	(4)	(5)	(6)	(7)	(8)	(9)
GROUP 0201 CHANNEL MODULE CIRCUIT CARD								
4	1	XDDZZ		CL650E150KPE	81349	CAPACITOR FIXED	EA	1
4	2	PAUZZ	5910-00-061-5108	CSR13E476KM	81349	CAPACITOR FIXED ELECTROLYTIC	EA	2
4	3	PAUZZ	5961-00-004-0399	1N3600	81349	SEMICONDUCTOR DEVICE DIODE	EA	31
4	4	PAUZZ	5910-00-481-1012	LC9A1A104F	01884	CAPACITOR FIXED	EA	1
4	5	XDUZZ		111044	44038	RESISTOR FIXED FILM	EA	1
4	6	PAUZZ	5910-00-105-1924	CK06BA223M	81349	CAPACITOR FIXED CERAMIC	EA	1
4	7	PAUZZ	5947-00-006-7193	114999	44038	COUNTING PAD	EA	27
4	8	XDUZZ		111046	44038	RESISTOR FIXED FILM	EA	1
4	9	PAUZZ	5961-00-014-9532	2N2484	81349	TRANSISTOR	EA	9
4	10	PAUZZ	5905-00-009-1960	MNR0JK681JFM	81349	RESISTOR FIXED FILM	EA	1
4	11	XDUZZ		20648	68245	TERMINAL STD	EA	1
4	12	XDUZZ		111045	44038	RESISTOR FIXED FILM	EA	1
4	13	XDUZZ		111043	44038	RESISTOR FIXED FILM	EA	1
4	14	XDDZZ		2N2907	81349	TRANSISTOR	EA	5
4	15	PAUZZ	5950-00-100-1163	114534	44038	REACTOR	EA	1
4	16	PAUZZ	5950-00-100-1164	114535	44038	REACTOR	EA	1
4	17	PAUZZ	5961-00-752-6121	1N75JA	81349	SEMICONDUCTOR DEVICE DIODE	EA	1
4	18	PAUZZ	5961-00-951-8757	2N2222	81349	TRANSISTOR	EA	14
4	19	PAUZZ	5944-00-924-3000	7717-180AP	13103	COUNTING PAD	EA	31
4	20	XDUZZ		A3301-2	12615	TERMINAL STD	EA	34
4	21	PAUZZ	5965-00-085-0130	RT22021203	81349	RESISTOR VARIABLE	EA	1
4	22	PAUZZ	5905-00-730-1512	KL075003J	81349	RESISTOR FIXED FILM	EA	1
4	23	XDDZZ		111037	44038	RESISTOR FIXED FILM	EA	1
4	24	XDUZZ		111039	44038	RESISTOR FIXED FILM	EA	1
4	25	PAUZZ	5910-00-110-0409	CL650M47KPE	81349	CAPACITOR FIXED	EA	2
4	26	PAUZZ	5965-00-067-0473	RT2202P501	81349	RESISTOR VARIABLE	EA	1
4	27	PAUZZ	5910-00-114-5268	CK050A222K	81349	CAPACITOR FIXED CERAMIC	EA	1
4	28	XDUZZ		111036	44038	RESISTOR FIXED FILM	EA	1
4	29	PAUZZ	5910-00-124-3034	CK06BA334K	81349	CAPACITOR FIXED CERAMIC	EA	1
4	30	PAUZZ	5905-00-481-3493	111047	44038	RESISTOR FIXED FILM	EA	1
4	31	PAUZZ	5910-00-104-3417	CSR13F505KM	81349	CAPACITOR FIXED ELECTROLYTIC	EA	1
4	32	PAUZZ	5910-00-441-0304	CSR13E396KM	81349	CAPACITOR FIXED ELECTROLYTIC	EA	1
4	33	XDDZZ		111041	44038	RESISTOR FIXED FILM	EA	1
4	34	PAUZZ	5950-00-100-1165	114536	44038	TRANSFORMER AUDIO	EA	1
4	35	XDUZZ		CM200C302G03	81349	CAPACITOR FIXED MIC	EA	1
4	36	XDDZZ		CL650D470KPE	81349	CAPACITOR FIXED	EA	1
4	37	XDDZZ		111047	44038	RESISTOR FIXED FILM	EA	1
4	38	XDUZZ		111366	44038	SPACER	EA	4
4	39	PAUZZ	5961-00-914-5746	1M246	81349	SEMICONDUCTOR DEVICE DIODE	EA	18

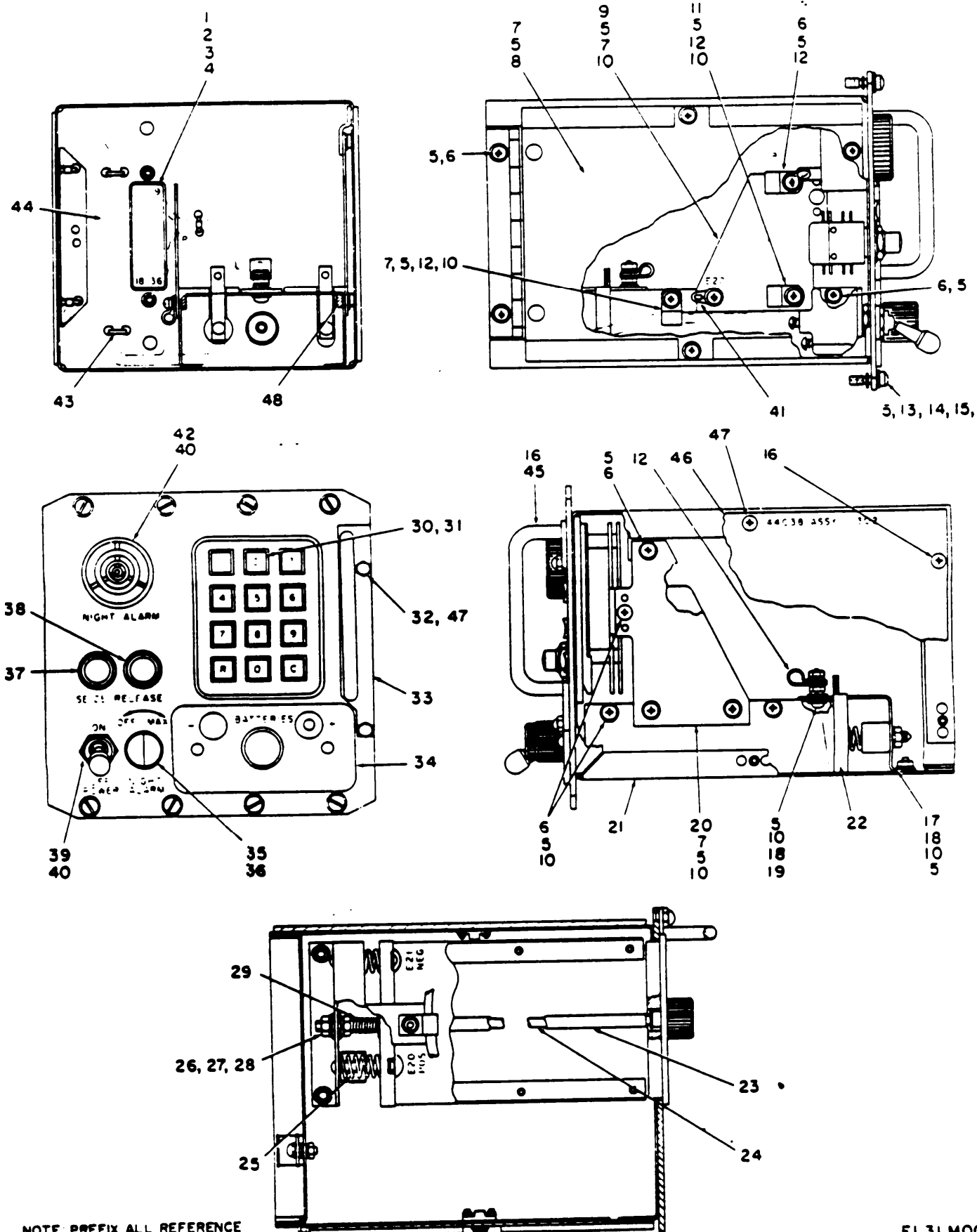
SECTION II

TM11-5805-689-24P

ILLUSTRATION		SMR CODE	NATIONAL STOCK NUMBER	PART NUMBER	FSCM	DESCRIPTION	CLASSIFICATION CODE	QTY	UNIT
(A) FIG NO	(B) ITEM NO								
4	40	XAUZZ		111303	44030	PRINTED WIRING BOARD		EA	1
4	41	XDDZZ		111040	44030	RESISTOR FIXED FILM		EA	1
4	42	XDUZZ		111322	44030	HINGE BUTT		EA	1
4	43	XDDZZ		111347	44030	BRACKET ANGLE		EA	1
4	44	XDDZZ		RL20510JJ	81340	RESISTOR FIXED FILM		EA	1
4	45	XDDZZ		4516535-248	96900	RIVET TUBULAR		EA	2
4	46	PADZZ	5910-00-100-1102	LS9A1A223F	01000	CAPACITOR FIXED		EA	2
4	47	XDDZZ		111030	44030	RESISTOR FIXED FILM		EA	1

14/(15 BLANK)

14/(15 BLANK)



NOTE: PREFIX ALL REFERENCE DESIGNATIONS WITH AIA5
16

Figure 5. Common Module, Rear, Left Hand Side, Front, Right Hand Side and Top Views.

ILLUSTRATION		SMR CODE	NATIONAL STOCK NUMBER	PART NUMBER	FSCM	DESCRIPTION	UNLABLE OR CODE	QTY	UNIT
(B) FIG NO.	(D) ITEM NO.								
GROUP 03 COMMON MODULE									
5	1	PAFZZ	5305-00-109-0280	114615	44038	SCREW MACHINE		EA	2
5	2	PAFZZ	5310-00-962-5160	79NTM38	72962	NUT SELF-LOCKING HEXAGON		EA	2
5	3	PAFZZ	5310-00-899-9145	MS9321-04	96906	WASHER FLAT		EA	8
5	4	PAFZZ	5935-00-027-8917	57-1U360	02660	CONNECTOR RECEPTACLE ELECT		EA	1
5	5	PAFZZ	5310-00-722-5998	MS15795-405	96906	WASHER FLAT		EA	25
5	6	PAFZZ	5305-00-054-6651	MS51957-27	96906	SCREW MACHINE PAN HEAD		EA	9
5	7	PAFZZ	5305-00-054-6652	MS51957-28	96906	SCREW MACHINE PAN HEAD		EA	9
5	8	PAFDL	5805-00-174-3506	111306	44038	CIRCUIT CARD ASSEMBLY		EA	1
5	9	XDFZZ		111325	44038	PLATE L-M		EA	1
5	10	PAFZZ	5310-00-929-6395	MS35338-136	96906	WASHER LOCK		EA	10
5	11	PAFZZ	5305-00-054-6653	MS51957-29	96906	SCREW MACHINE PAN HEAD		EA	1
5	12	PAFZZ	5340-00-956-4436	3-16-4T	95987	CLAMP LCDP		EA	4
5	13	PAFZZ	5305-00-933-4162	Y9-3	00141	SCREW MACHINE		EA	5
5	14	XDFZZ		117081	44038	WASHER FLAT		EA	1
5	15	PAFZZ	5310-00-163-9827	117134	44038	WASHER RECESSED		EA	1
5	16	PAFZZ	5305-00-958-2916	MS24693C26	96906	SCREW MACHINE		EA	1
5	17	XDFZZ		111315	44038	BRACKET TERMINAL BLOCK		EA	1
5	18	PAFZZ	5310-00-934-9761	MS35649-264	96906	NUT PLAIN HEXAGON		EA	2
5	19	PAFZZ	5305-00-054-6655	MS51957-31	96906	SCREW MACHINE PAN HEAD		EA	1
5	20	XDFZZ		111324	44038	PLATE R M		EA	1
5	21	XDFZZ		111314	44038	FRAME COMMON MODULE		EA	1
5	22	XDFZZ		111316	44038	TERMINAL BLOCK		EA	1
5	23	XDFZZ		111320	44038	EXTRACTOR BATTERY		EA	1
5	24	XDFZZ		111319	44038	STUD PLAIN		EA	1
5	25	PAFZZ	5360-00-114-5645	111317	44038	SPRING HELICAL COMPRESSION		EA	2
5	26	PAFZZ	5310-00-934-9765	MS35650-304	96906	NUT PLAIN HEXAGON		EA	2
5	27	PAFZZ	5310-00-619-1148	MS15795-808	96906	WASHER FLAT		EA	2
5	28	PAFZZ	5310-00-933-4120	MS35338-134	96906	WASHER LOCK		EA	2
5	29	PAFZZ	5360-00-114-5651	111318	44038	SPRING HELICAL COMPRESSION		EA	1
5	30	PAFZZ	5605-00-100-1159	111055	44038	SWITCH PUSH		EA	1
5	31	XDFZZ		111607	44038	BEZEL KEYSER		EA	1
5	32	PAFZZ	5310-00-199-7635	MS24679-21	96906	NUT PLAIN CAP		EA	2
5	33	XDFZZ		111353	44038	SPACER HANDLE		EA	1
5	34	XDFZZ		111309	44038	COVER BATTERY		EA	1
5	35	PAFZZ	5905-00-911-5795	RV2N8Y5D502A	81349	RESISTOR VARIABLE		EA	1
5	36	PAFZZ	5355-00-543-0789	MS91528-1M28	96906	KNOB		EA	1
5	37	PAFZZ	5930-00-100-1174	114648	44038	SWITCH PUSH		EA	1
5	38	PAFZZ	5930-00-100-1168	114647	44038	SWITCH PUSH		EA	1
5	39	PAFZZ	5930-00-843-8990	MS24658-220	96906	SWITCH TOGGLE		EA	1

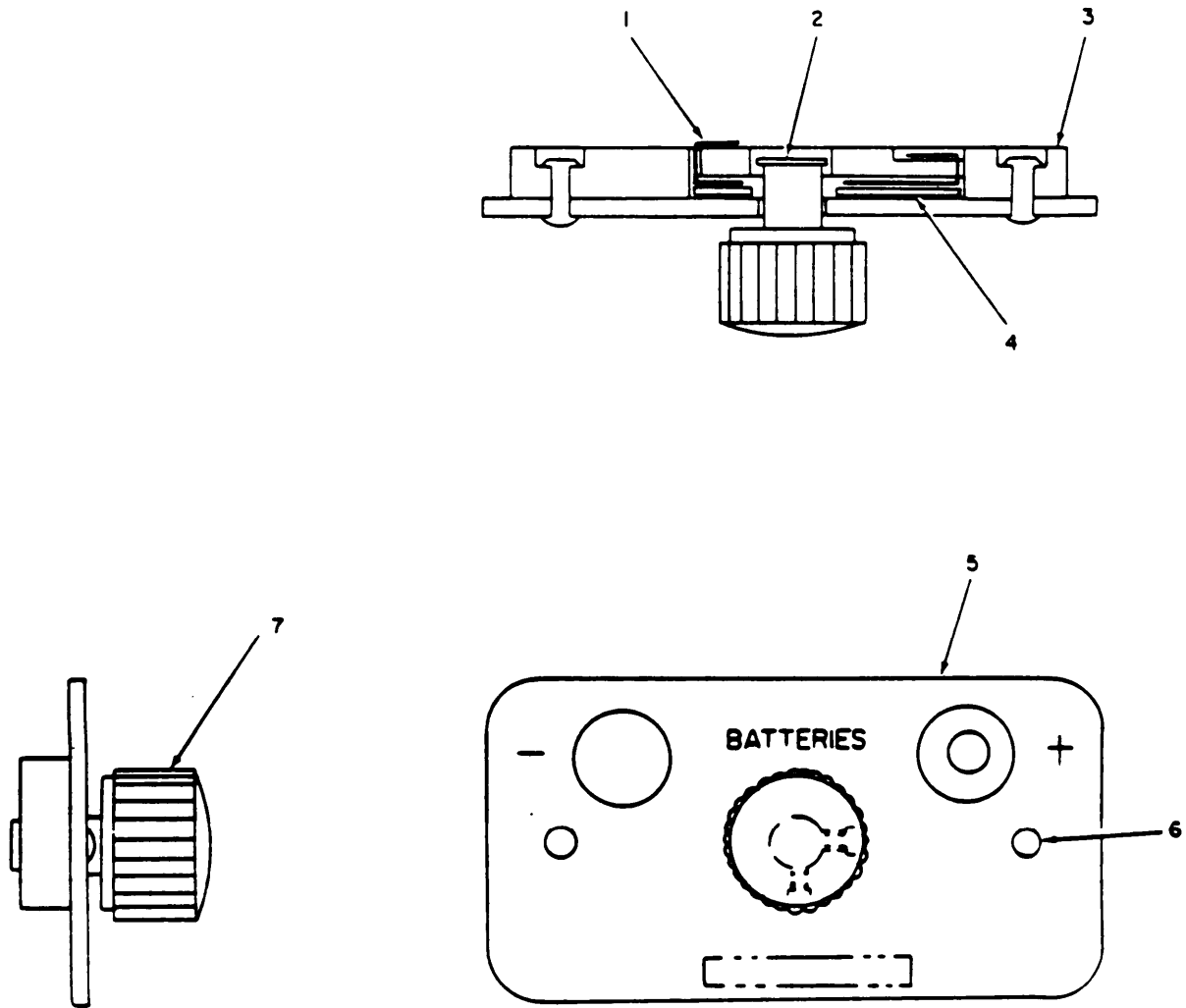
SECTION II

TM11-5805-689-24P

ILLUSTRATION					DESCRIPTION			
(8) FIG NO	(9) ITEM NO	(2) SMR CODE	(3) NATIONAL STOCK NUMBER	(4) PART NUMBER	(5) FSCM		(6) UNABLE ON CODE	(7) QTY NO
5	40	PAFZZ	5940-00-983-7091	323011	00779	TERMINAL LUG		EA 4
5	41	PAFZZ	5940-00-815-8958	2104-06-02	78189	TERMINAL LUG		EA 1
5	42	PAFZZ	5820-00-134-9372	SC628M	90201	LOUDSPEAKER		EA 1
5	43	PAFZZ	5975-00-727-5153	MS3367-4-9	96906	STRAP TIEDOWN		EA 5
5	44	XDFZZ		111311	44038	WIRING HARNESS		EA 1
5	45	XDFZZ		110787	44038	HANDLE BOW		EA 1
5	46	XDFZZ		111321	44038	COVER COMMON MODULE		EA 1
5	47	PAFZZ	5305-00-969-6495	MS24693C25	96906	SCREW MACHINE		EA 6
5	48	XDFZZ		111326	44038	NUT STRIP		EA 2

18/19 BLANK

18/19 BLANK



NOTE: PREFIX ALL REFERENCE DESIGNATIONS WITH AIA5

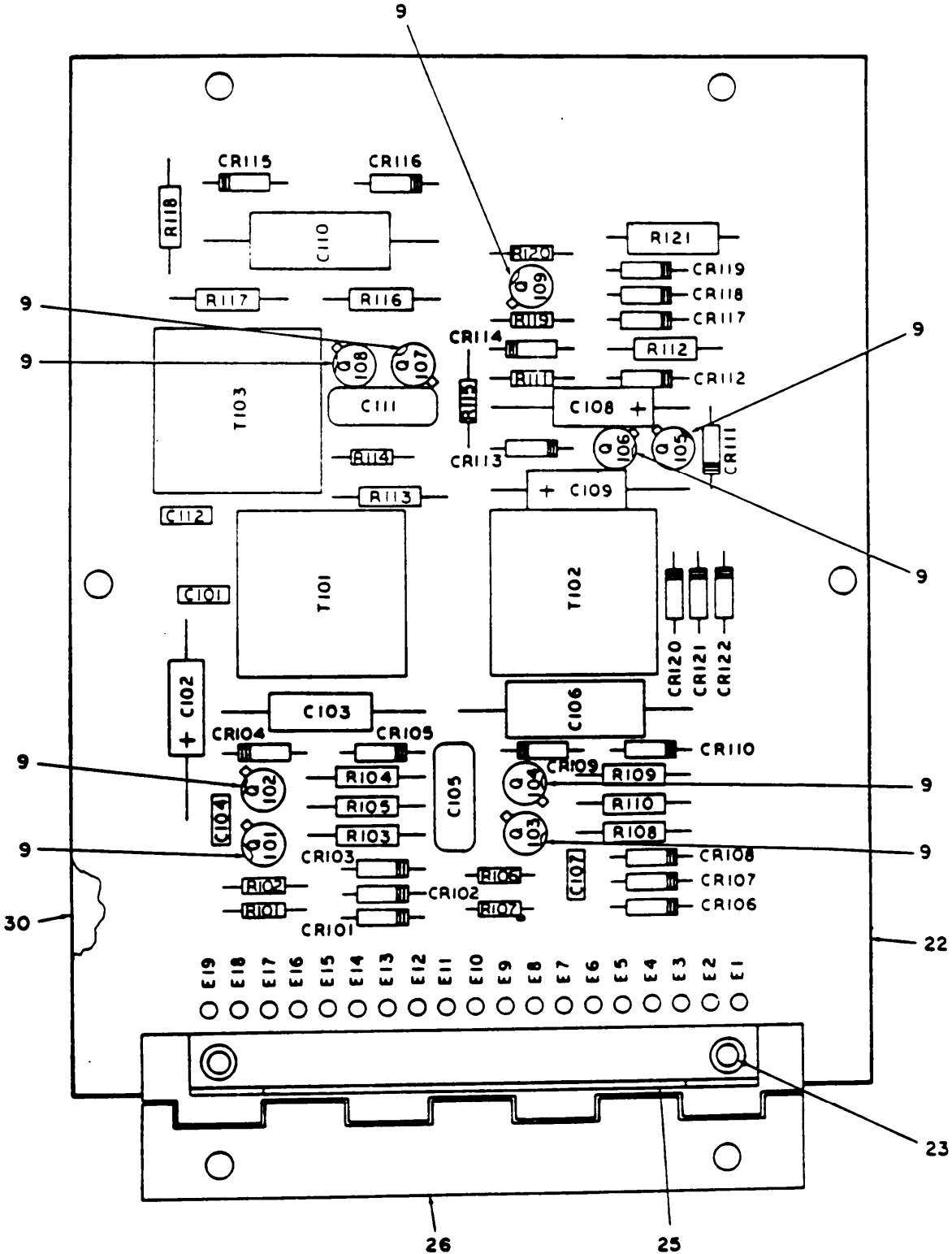
EL3LM006

Figure 6. Common Module, Battery Case, Top, Side and Front Views.

ILLUSTRATION					DESCRIPTION	QTY
(A) FIG NO	(B) ITEM NO	SMR CODE	NATIONAL STOCK NUMBER	PART NUMBER	FSCM	UNIT
6	1	XDDZZ		111330	44038 BUS BATTERY	EA 1
6	2	XDDZZ		111329	44038 BUSHING PANEL	EA 1
6	3	XDDZZ		111328	44038 BLOCK GUIDE	EA 1
6	4	XDDZZ		111331	44038 INSULATOR PLATE	EA 1
6	5	XDDZZ		111327	44038 PLATE FRONT	EA 1
6	6	PAFZZ	5320-00-679-6607	MS16535-82	96906 RIVET TUBULAR	EA 2
6	7	PAFZZ	5355-00-543-0789	MS91528-1N28	96906 KNOB	EA 1

21/(22 BLANK)

21/(22 BLANK)



NOTE: PREFIX ALL REFERENCE DESIGNATIONS WITH AIASAI

EL3LM007

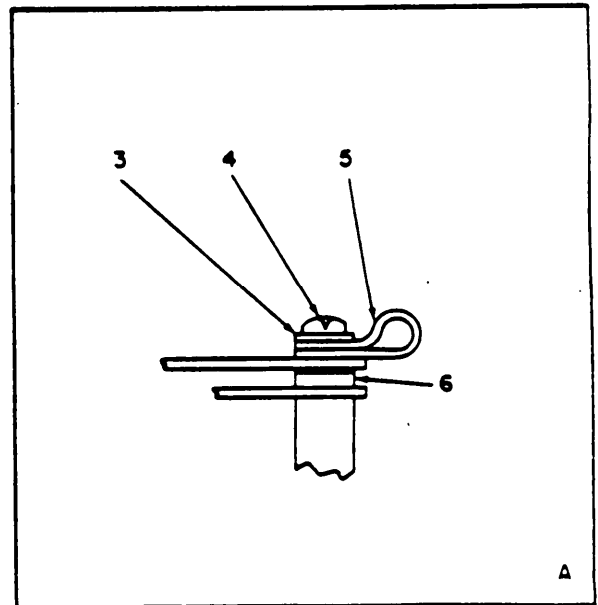
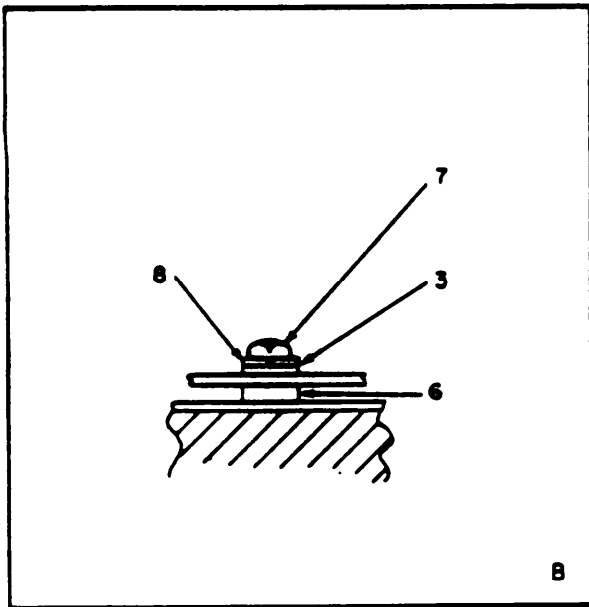
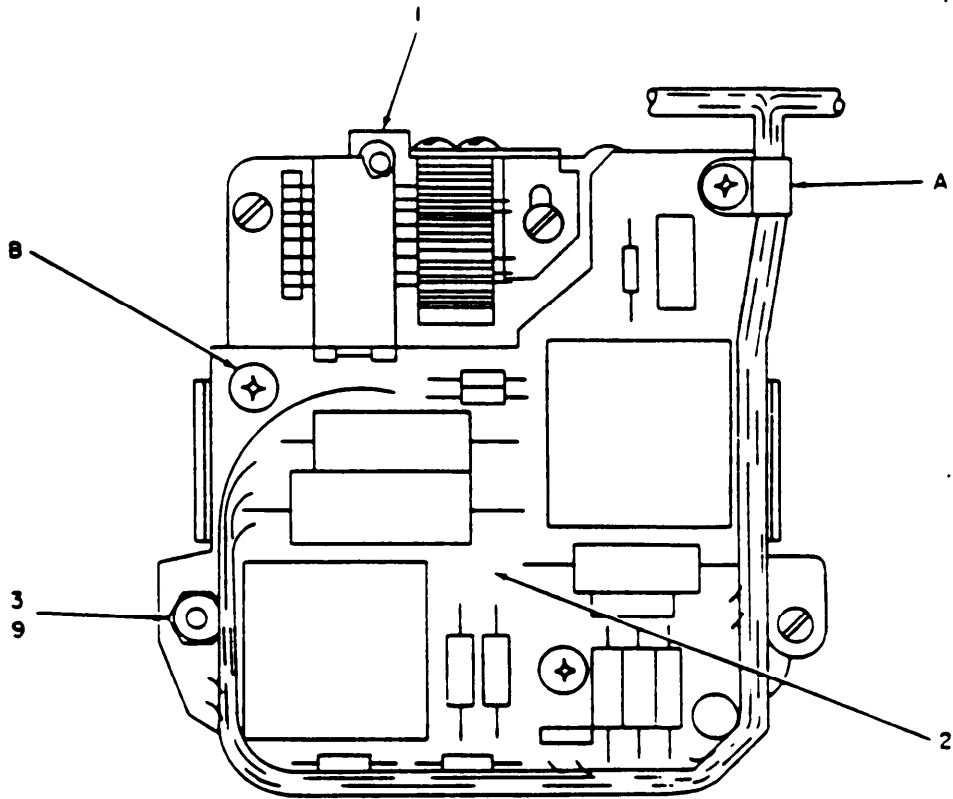
Figure 7. Common Module Circuit Card (Sheet 1 of 2).

REF DES	ITEM NO.	REF DES	ITEM NO.
C101	2	E10	24
C102	32	E11	24
C103	31	E12	24
C104	3	E13	24
C105	7	E14	24
C106	13	E15	24
C107	3	E16	24
C108	20	E17	24
C109	20	E18	24
C110	13	E19	24
C111	7	Q101	10
C112	3	Q102	8
CR101	15	Q103	10
CR102	15	Q104	8
CR103	15	Q105	8
CR104	14	Q106	8
CR105	15	Q107	10
CR106	15	Q108	8
CR107	15	Q109	10
CR108	15	R101	5
CR109	14	R102	5
CR110	15	R103	29
CR111	15	R104	27
CR112	15	R105	28
CR113	15	R106	5
CR 1 14	15	R107	5
CR115	14	R108	11
CR116	15	R109	11
CR117	15	R110	12
CR118	15	R111	17
CR 1 19	15	R112	19
CR120	15	R113	4
CR121	15	R114	5
CR122	15	R115	5
E 1	24	R116	11
E 2	24	R117	11
E 3	24	R118	12
E 4	24	R119	17
E 5	24	R120	16
E 6	24	R121	18
E 7	24	T101	1
E 8	24	T102	21
E 9	24	T103	6

EL3LM011

Figure 7. Common Module Circuit Card (Sheet 2 of 2).

(1) ILLUSTRATION		(2)	(3)	(4)	(5)	(6)	(7)	(8)
(a) FIG NO.	(b) ITEM NO.	SMR CODE	NATIONAL STOCK NUMBER	PART NUMBER	FSCM	DESCRIPTION	USABLE ON CODE	QTY INC IN UNIT
GROUP 0301 COMMON MODULE CIRCUIT CARD								
7	1	PADZZ	5950-00-099-0521	114652	44038	TRANSFORMER AUDIO		EA 1
7	2	PADZZ	5910-00-105-1924	CK068X223M	81349	CAPACITOR FIXED CERAMIC		EA 1
7	3	PADZZ	5910-00-124-5084	CK068X334K	81349	CAPACITOR FIXED CERAMIC		EA 3
7	4	XDDZZ		RNR60K1073FM	81349	RESISTOR FIXED FILM		EA 1
7	5	PADZZ	5905-00-730-1498	RL075123J	81349	RESISTOR FIXED FILM		EA 6
7	6	PADZZ	5950-00-099-0516	114538	44038	TRANSFORMER AUDIO		EA 1
7	7	PADZZ	5910-00-071-7399	CM04FD152F03	81349	CAPACITOR FIXED MICA		EA 2
7	8	PADZZ	5961-00-951-4756	2N2222	81349	TRANSISTOR		EA 5
7	9	PADZZ	5999-00-929-3086	7717-180AP	13103	MOUNTING PAD		EA 9
7	10	XDDZZ		2N2907	81349	TRANSISTOR		EA 4
7	11	PADZZ	5905-00-432-6410	RNR60K1001FM	81349	RESISTOR FIXED FILM		EA 4
7	12	XDDZZ		RNR60K1820FM	81349	RESISTOR FIXED FILM		EA 2
7	13	PADZZ	5910-00-481-1012	LC9A1A104F	01884	CAPACITOR FIXED		EA 2
7	14	PADZZ	5961-00-852-7549	1N754A	81349	SEMICONDUCTOR DEVICE DIODE		EA 3
7	15	PADZZ	5961-00-604-0399	1N3600	81349	SEMICONDUCTOR DEVICE DIODE		EA 15
7	16	PADZZ	5905-00-730-1499	RL075153J	81349	RESISTOR FIXED FILM		EA 1
7	17	PADZZ	5905-00-913-3073	RL075103J	81349	RESISTOR FIXED FILM		EA 2
7	18	PADZZ	5905-00-975-1299	RL325101J	81349	RESISTOR FIXED FILM		EA 1
7	19	PADZZ	5905-00-125-0826	RNR60K2493FM	81349	RESISTOR FIXED FILM		EA 1
7	20	PADZZ	5910-00-229-4492	CL658C250JPE	81349	CAPACITOR FIXED ELECTROLYTIC		EA 2
7	21	PADZZ	5950-00-099-0520	114651	44038	TRANSFORMER AUDIO		EA 1
7	22	XADZZ		111305	44038	PRINTED WIRING BOARD		EA 1
7	23	XDBZZ		MS16939-248	98906	RIVET TUBULAR		EA 2
7	24	XDBZZ		44381-2	12619	TERMINAL STUD		EA 19
7	25	XDDZZ		111347	44038	BRACKET ANGLE		EA 1
7	26	XDDZZ		111322	44038	HINGE BUTT		EA 1
7	27	XDDZZ		RNR60K1501FM	81349	RESISTOR FIXED FILM		EA 1
7	28	PADZZ	5905-00-137-0806	RNR60K8060FM	81349	RESISTOR FIXED FILM		EA 1
7	29	XDDZZ		RNR60K9090FM	81349	RESISTOR FIXED FILM		EA 1
7	30	XDDZZ		111346	44038	SPACER		EA 4
7	31	PADZZ	5910-00-100-1102	LS9A1A223F	01884	CAPACITOR FIXED		EA 1
7	32	XDDZZ		CL658D470KPE	81349	CAPACITOR FIXED		EA 1



NOTE: PREFIX ALL REFERENCE DESIGNATIONS WITH AIA555

EL3LM008

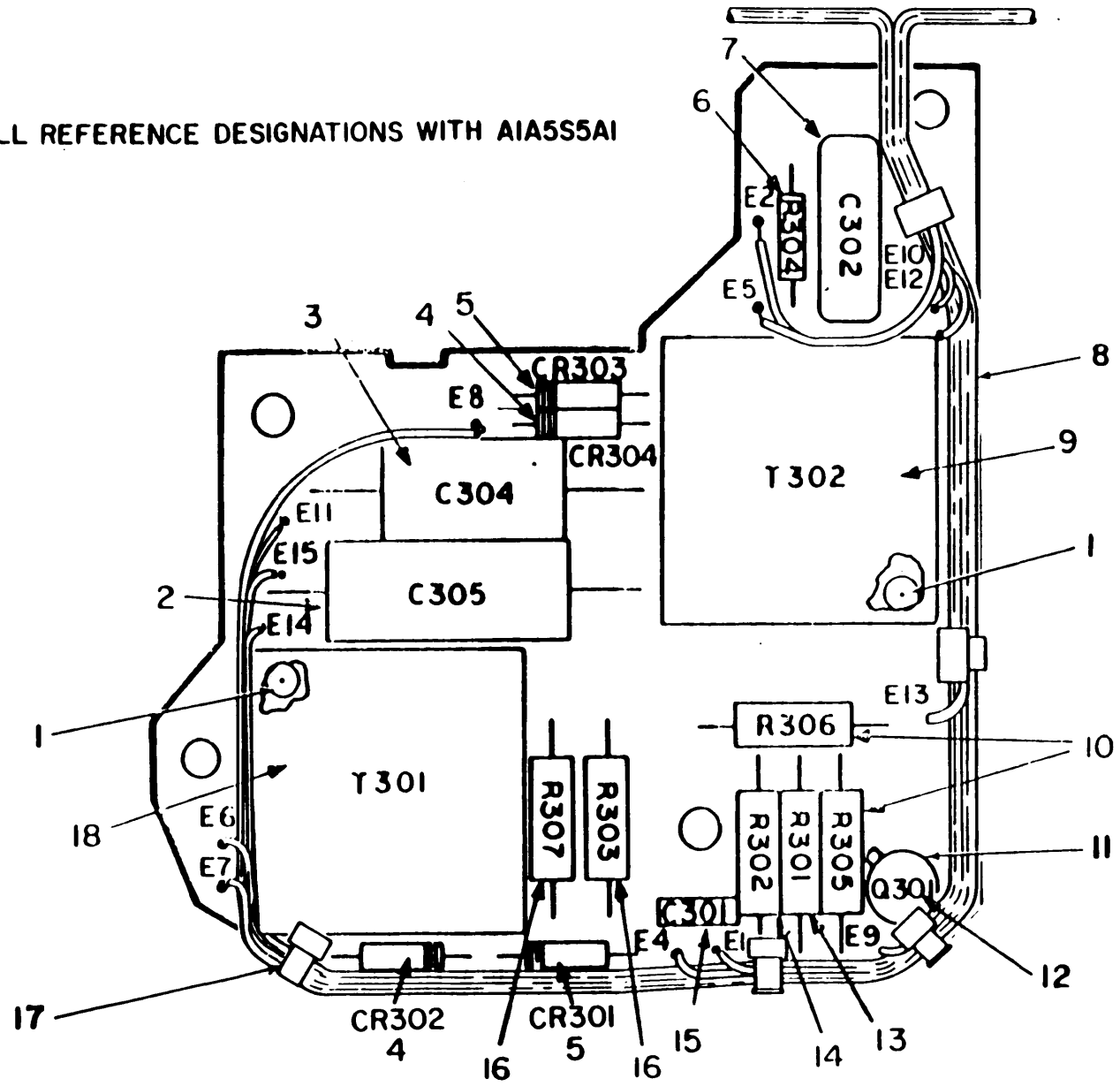
Figure 8. Oscillator Assembly, Mounting Details.

SECTION II

TM11-5805-689-24P

(1) ILLUSTRATION		(2)	(3)	(4)	(5)	(6)	(7)	(8)
(A) FIG NO.	(B) ITEM NO.	SMR CODE	NATIONAL STOCK NUMBER	PART NUMBER	FSCM	DESCRIPTION	USABLE ON CODE	QTY INC N UNIT
GROUP 0302 OSCILLATOR ASSEMBLY								
d	1	PAFZZ	5405-00-007-4041	11374-1	25397	SWITCH PUSH		EA 1
e	2	PAFDD	5805-00-174-3511	111002	44038	OSCILLATOR AUDIO FREQUENCY		EA 1
d	3	PAFZZ	5310-00-782-1349	MS15795-404	96906	WASHER FLAT		EA 4
d	4	PAFZZ	5305-00-170-1548	MS24626-14	96906	SCREW TAPPING THREAD CUTTING		EA 1
d	5	XDDZZ		1-8-47	95927	CLAMP LOOP		EA 1
d	6	XDFZZ		86148-1	25397	SPACER		EA 3
d	7	PAFZZ	5305-00-054-5648	MS51457-14	96906	SCREW MACHINE PAN HEAD		EA 2
d	8	PAFZZ	5310-00-933-8118	MS35338-135	96906	WASHER LOCK		EA 2
d	9	PAFZZ	5310-00-982-4999	MS21044C04	96906	NUT SELF LOCKING HEXAGON		EA 1

NOTE:
PREFIX ALL REFERENCE DESIGNATIONS WITH AIA5S5A1



EL3LM009

Figure 9. Oscillator Assembly, Circuit Cards Assembly.

SECTION II

T11-5805-689-24P

(1) ILLUSTRATION		(2)	(3)	(4)	(5)	(6) DESCRIPTION	(7)	(8)
(A) FIG NO	(B) ITEM NO	SMR CODE	NATIONAL STOCK NUMBER	PART NUMBER	FSCM	DESCRIPTION	U/M	QTY INC IN UNIT
						USABLE ON CODE		
9	1	PAFZZ	5999-00-006-7193	114999	44038	MOUNTING PAD	EA	8
9	2	PAFZZ	5910-00-482-0397	LS9A1A823F	01884	CAPACITOR FIXED	EA	1
9	3	PAFZZ	5910-00-482-0396	LS9A1A393F	01884	CAPACITOR FIXED	EA	1
9	4	PADZZ	5961-00-404-0399	IN3600	81349	SEMICONDUCTOR DEVICE DIODE	EA	2
9	5	PAFZZ	5961-00-852-7549	IN754A	81349	SEMICONDUCTOR DEVICE DIODE	EA	2
9	6	PAFZZ	5905-00-727-5341	RL07S102J	81349	RESISTOR FIXED FILM	EA	1
9	7	PAFZZ	5910-00-965-9441	CM06FD102J03	81349	CAPACITOR FIXEDMICA	EA	1
9	8	XAFZZ		111001	44038	PRINTED WIRING BOARD	EA	1
9	9	PAFZZ	5950-00-100-1161	112425	44038	TRANSFORMER AUDIO FREQUENCY	EA	1
9	10	XDDZZ		RNR60K1501PM	81349	RESISTOR FIXED FILM	EA	2
9	11	PAFZZ	5999-00-929-3086	7717-18DAP	13103	MOUNTING PAD	EA	1
9	12	PAFZZ	5961-00-951-8756	2N2222	81349	TRANSISTOR	EA	1
9	13	XDFZZ		RNR60K2102FM	81349	RESISTOR FIXED FILM	EA	1
9	14	XDFZZ		RNR60K7681	81349	RESISTOR FIXED FILM	EA	1
9	15	PAFZZ	5910-00-124-5064	CR06K334K	81349	CAPACITOR FIXED	EA	1
9	16	XDFZZ		RNR60K2430FM	81349	RESISTOR FIXED FILM	EA	2
9	17	PAFZZ	5975-00-727-5153	MS3367-4-9	96906	STRAP TIEDOWN	EA	5
9	18	PAFZZ	5950-00-100-1160	112424	44038	TRANSFORMER AUDIO FREQUENCY	EA	1

NOTE: LATEST NATIONAL STOCK NUMBER ASSIGNMENTS ARE SHOWN IN THIS INDEX.

STOCK NUMBER	FIGURE NO.	ITEM NO.	STOCK NUMBER	FIGURE NO.	ITEM NO.
5994-00-000-0000	4	7	5994-00-000-0000	7	11
5995-00-000-0000	9	1	5995-00-000-0000	4	32
5996-00-000-0000	8	1	5996-00-000-0000	4	4
6250-00-000-0000	2	31	5997-00-000-0000	7	13
5998-00-000-0000	3	57	5998-00-000-0000	4	30
5999-00-000-0000	5	4	5999-00-000-0000	4	3
5999-00-000-0000	1	0	5999-00-000-0000	9	2
5999-00-000-0000	3	19	5999-00-000-0000	3	29
5999-00-000-0000	6	7	5999-00-000-0000	5	36
5999-00-000-0000	2	27	5999-00-000-0000	6	7
5999-00-000-0000	3	14	5999-00-000-0000	2	1
5999-00-000-0000	5	0	5999-00-000-0000	3	22
5999-00-000-0000	2	4	5999-00-000-0000	3	17
5999-00-000-0000	3	54	5999-00-000-0000	4	3
5999-00-000-0000	5	7	5999-00-000-0000	7	15
5999-00-000-0000	5	11	5999-00-000-0000	4	4
5999-00-000-0000	5	19	5999-00-000-0000	2	0
5999-00-000-0000	3	26	5999-00-000-0000	3	34
5999-00-000-0000	2	16	5999-00-000-0000	5	41
5999-00-000-0000	3	53	5999-00-000-0000	5	27
5999-00-000-0000	3	9	5999-00-000-0000	4	10
5999-00-000-0000	2	24	5999-00-000-0000	3	38
5999-00-000-0000	4	20	5999-00-000-0000	2	5
5999-00-000-0000	3	23	5999-00-000-0000	3	4
5999-00-000-0000	7	7	5999-00-000-0000	5	5
5999-00-000-0000	4	21	5999-00-000-0000	2	12
5999-00-000-0000	3	50	5999-00-000-0000	2	2
5999-00-000-0000	7	0	5999-00-000-0000	3	20
5999-00-000-0000	7	21	5999-00-000-0000	5	43
5999-00-000-0000	7	1	5999-00-000-0000	4	17
5999-00-000-0000	5	47	5999-00-000-0000	5	0
5999-00-000-0000	4	40	5999-00-000-0000	3	45
5999-00-000-0000	7	31	5999-00-000-0000	7	5
5999-00-000-0000	3	0	5999-00-000-0000	7	10
5999-00-000-0000	5	30	5999-00-000-0000	4	22
5999-00-000-0000	4	10	5999-00-000-0000	3	41
5999-00-000-0000	9	9	5999-00-000-0000	4	17
5999-00-000-0000	3	33	5999-00-000-0000	3	37
5999-00-000-0000	4	15	5999-00-000-0000	3	40
5999-00-000-0000	4	16	5999-00-000-0000	3	42
5999-00-000-0000	4	34	5999-00-000-0000	3	3
5999-00-000-0000	5	38	5999-00-000-0000	2	30
5999-00-000-0000	3	51	5999-00-000-0000	3	39
5999-00-000-0000	5	37	5999-00-000-0000	4	9
5999-00-000-0000	1	9	5999-00-000-0000	3	25
5999-00-000-0000	3	43	5999-00-000-0000	5	37
5999-00-000-0000	4	31	5999-00-000-0000	7	14
5999-00-000-0000	4	6	5999-00-000-0000	9	5
5999-00-000-0000	7	2	5999-00-000-0000	4	2
5999-00-000-0000	2	13	5999-00-000-0000	6	6
5999-00-000-0000	2	10	5999-00-000-0000	2	14
5999-00-000-0000	3	32	5999-00-000-0000	2	19
5999-00-000-0000	5	1	5999-00-000-0000	3	31
5999-00-000-0000	4	25	5999-00-000-0000	5	3
5999-00-000-0000	4	27	5999-00-000-0000	5	35
5999-00-000-0000	5	25	5999-00-000-0000	7	17
5999-00-000-0000	5	29	5999-00-000-0000	4	39
5999-00-000-0000	1	3	5999-00-000-0000	3	18
5999-00-000-0000	4	29	5999-00-000-0000	4	17
5999-00-000-0000	7	3	5999-00-000-0000	7	9
5999-00-000-0000	9	15	5999-00-000-0000	9	11
5999-00-000-0000	7	19	5999-00-000-0000	3	44
5999-00-000-0000	3	46	5999-00-000-0000	3	3
5999-00-000-0000	5	42	5999-00-000-0000	5	13
5999-00-000-0000	7	28	5999-00-000-0000	8	8
5999-00-000-0000	3	0	5999-00-000-0000	2	15
5999-00-000-0000	5	15	5999-00-000-0000	5	28
5999-00-000-0000	2	20	5999-00-000-0000	2	8
5999-00-000-0000	8	4	5999-00-000-0000	3	12
5999-00-000-0000	1	10	5999-00-000-0000	5	18
5999-00-000-0000	5	8	5999-00-000-0000	5	26
5999-00-000-0000	3	15	5999-00-000-0000	3	16
5999-00-000-0000	1	5	5999-00-000-0000	7	8
5999-00-000-0000	8	2	5999-00-000-0000	4	12
5999-00-000-0000	1	1	5999-00-000-0000	4	13
5999-00-000-0000	3	3	5999-00-000-0000	2	29
5999-00-000-0000	5	32	5999-00-000-0000	3	11
5999-00-000-0000	7	20	5999-00-000-0000	5	12
5999-00-000-0000	3	36	5999-00-000-0000	3	7
5999-00-000-0000	2	9	5999-00-000-0000	5	16

STOCK NUMBER	FIGURE NO.	ITEM NO.	STOCK NUMBER	FIGURE NO.	ITEM NO.
5310-00-902-5160	2	17	5905-00-975-1294	7	10
5310-00-902-5160	3	30	5310-00-982-4999	3	21
5310-00-902-5160	5	2	5310-00-982-4999	8	9
5910-00-905-9441	9	7	5310-00-982-6813	3	10
5305-00-969-6495	3	2	5440-00-983-7091	2	28
5305-00-969-6495	5	47	5440-00-983-7091	5	40

PART NUMBER	FSCM	FIG. NO.	ITEM NO.	PART NUMBER	FSCM	FIG. NO.	ITEM NO.
AB381-2	12615	4	20	MS35649-264	96906	2	5
AB381-2	12615	7	24	MS35649-264	96906	3	12
CK058X222K	81349	4	27	MS35649-264	96906	5	12
CK008X223M	81349	4	5	MS51957-14	96906	5	20
CK008X223M	81349	7	2	MS51957-16	96906	8	7
CK008X334K	81349	4	29	MS51957-27	96906	2	27
CK008X334K	81349	7	3	MS51957-28	96906	3	14
CK068X334K	81349	9	15	MS51957-28	96906	5	6
CK068X564K	81349	3	29	MS51957-28	96906	2	4
CL658C250JPE	81349	7	20	MS51957-28	96906	3	54
CL658D470KPE	81349	4	36	MS51957-28	96906	5	7
CL658E150KPE	81349	7	32	MS51957-29	96906	5	11
CL658N4R7KPE	81349	4	1	MS51957-31	96906	3	19
CM06FD102J03	81349	4	25	MS51957-38	96906	3	20
CM06FD152F03	81349	9	7	MS51957-45	96906	3	19
CM2JEC3J2G03	81349	7	7	MS51957-46	96906	2	10
CSR13E396AP	81349	4	35	MS51957-46	96906	5	11
CSR13E476AM	81349	4	32	MS51957-46	96906	3	19
CSR13F565KM	81349	4	2	MS51957-46	96906	3	21
IN3000	81349	4	31	MS51957-46	96906	3	21
IN3000	81349	7	15	MS51957-46	96906	3	21
IN754A	81349	9	4	MS51957-46	96906	3	21
IN754A	81349	7	14	MS51957-46	96906	3	21
LC9A1A104F	81349	9	5	MS51957-46	96906	3	21
LC9A1A104F	01884	4	4	MS51957-46	96906	3	21
LS9A1A223F	01884	7	13	MS51957-46	96906	3	21
LS9A1A223F	01884	4	46	MS51957-46	96906	3	21
LS9A1A223F	01884	7	31	MS51957-46	96906	3	21
LS9A1A393F	01884	9	3	MS51957-46	96906	3	21
LS9A1A823F	01884	9	2	MS51957-46	96906	3	21
MS15795-802	96906	3	17	MS51957-46	96906	3	21
MS15795-804	96906	8	3	MS51957-46	96906	3	21
MS15795-805	96906	2	5	MS51957-46	96906	3	21
MS15795-805	96906	3	4	MS51957-46	96906	3	21
MS15795-805	96906	5	5	MS51957-46	96906	3	21
MS15795-807	96906	2	14	MS51957-46	96906	3	21
MS15795-808	96906	5	27	MS51957-46	96906	3	21
MS16535-24E	96906	4	45	MS51957-46	96906	3	21
MS16535-24E	96906	7	23	MS51957-46	96906	3	21
MS16535-82	96906	6	6	MS51957-46	96906	3	21
MS2047JAC3-4	96906	1	3	MS51957-46	96906	3	21
MS21044C04	96906	3	21	MS51957-46	96906	3	21
MS21044C04	96906	8	9	MS51957-46	96906	3	21
MS21044C06	96906	3	10	MS51957-46	96906	3	21
MS24626-14	96906	8	4	MS51957-46	96906	3	21
MS24658-220	96906	5	39	MS51957-46	96906	3	21
MS24679-21	96906	3	1	MS51957-46	96906	3	21
MS24679-21	96906	5	32	MS51957-46	96906	3	21
MS24693C25	96906	3	2	MS51957-46	96906	3	21
MS24693C25	96906	5	47	MS51957-46	96906	3	21
MS24693C26	96906	3	7	MS51957-46	96906	3	21
MS24693C26	96906	5	10	MS51957-46	96906	3	21
MS24693C27	96906	2	24	MS51957-46	96906	3	21
MS24693C28	96906	3	9	MS51957-46	96906	3	21
MS24693C6	96906	3	23	MS51957-46	96906	3	21
MS25036-101	96906	2	30	MS51957-46	96906	3	21
MS3367-4-9	96906	2	2	MS51957-46	96906	3	21
MS3367-4-9	96906	3	28	MS51957-46	96906	3	21
MS3367-4-9	96906	5	43	MS51957-46	96906	3	21
MS3367-4-9	96906	9	17	MS51957-46	96906	3	21
MS3338-134	96906	3	18	MS51957-46	96906	3	21
MS3338-135	96906	8	8	MS51957-46	96906	3	21
MS3338-136	96906	2	7	MS51957-46	96906	3	21
MS3338-136	96906	3	13	MS51957-46	96906	3	21
MS3338-136	96906	5	10	MS51957-46	96906	3	21
MS3338-137	96906	2	15	MS51957-46	96906	3	21
MS3338-138	96906	5	28	MS51957-46	96906	3	21
MS35484-6	96906	2	9	MS51957-46	96906	3	21
MS35649-224	96906	3	16	MS51957-46	96906	3	21

PART NUMBER	FSCM	FIG. NO.	ITEM NO.	PART NUMBER	FSCM	FIG. NO.	ITEM NO.
111001	44038	9	8	111353	44038	5	35
111002	44038	8	2	111007	44038	5	31
111036	44038	4	28	112424	44038	9	18
111037	44038	4	23	112425	44038	9	9
111038	44038	4	47	112540	44038	2	20
111039	44038	4	24	11378-1	25397	3	1
111040	44038	4	41	114259	44038	3	33
111041	44038	4	33	114534	44038	4	15
111042	44038	4	30	114535	44038	4	16
111043	44038	4	13	114536	44038	4	34
111044	44038	4	5	114538	44038	7	6
111045	44038	4	12	114608	44038	3	46
111046	44038	4	8	114615	44038	2	18
111047	44038	4	37	114615	44038	3	32
111055	44038	5	30	114615	44038	5	1
111301	44038	1	6	114647	44038	5	38
111302	44038	2	22	114648	44038	3	51
111303	44038	4	40	114648	44038	5	37
111304	44038	3	15	114651	44038	7	21
111305	44038	7	22	114652	44038	7	1
111306	44038	5	8	114959	44038	4	7
111307	44038	1	1	114999	44038	9	1
111308	44038	1	5	116485	44038	3	47
111309	44038	5	34	116975	44038	3	20
111310	44038	3	27	116976	44038	3	24
111311	44038	5	44	117081	44038	3	5
111312	44038	2	3	117061	44038	5	14
111313	44038	3	55	117139	44038	3	5
111314	44038	5	21	117139	44038	5	15
111315	44038	5	17	2N2222	81349	4	16
111316	44038	5	22	2N2222	81349	7	3
111317	44038	5	25	2N2222	81349	9	12
111318	44038	5	29	2N2484	81349	4	9
111319	44038	5	24	2N2907	81349	4	14
111320	44038	5	23	2N2907	81349	7	10
111321	44038	5	46	20048	88245	4	11
111322	44038	4	42	2104-06-02	78189	2	6
111322	44038	7	26	2104-06-02	78189	3	34
111323	44038	3	35	2104-06-02	78189	5	41
111324	44038	5	20	3-16-4T	95987	2	29
111325	44038	5	9	3-16-4T	95987	3	11
111326	44038	5	48	3-16-4T	95987	5	12
111327	44038	6	5	323011	00779	2	28
111328	44038	6	3	323011	00779	5	40
111329	44038	6	2	352-11-04-001	71785	2	26
111330	44038	6	1	3648-2	71279	3	36
111331	44038	6	4	405-50-4	81590	2	31
111332	44038	2	23	57-10360	02660	3	57
111333	44038	2	25	57-10360	02660	5	4
111336	44038	1	7	57-20360	02660	2	1
111339	44038	2	21	7717-18DAP	13103	4	19
111344	44038	1	9	7717-18DAP	13103	7	7
111346	44038	4	38	7717-18DAP	13103	9	11
111346	44038	7	30	79NTM38	72962	2	17
111347	44038	4	43	79NTM38	72962	3	30
111347	44038	7	25	79NTM38	72962	5	2
111348	44038	3	56	86148-1	25397	8	6
111349	44038	3	52	9765-5	72825	2	13
111350	44038	1	2	9766-143	44038	2	11
111351	44038	1	4	9766-145	72825	2	10
111352	44038	3	48				

LATEST NATIONAL STOCK NUMBER ASSIGNMENTS

STOCK NUMBER	FIG. NO.	ITEM NO.
5310-00-929-6395	2	7
5310-00-929-6395	3	13
5310-00-929-6395	5	10

RECOMMENDED CHANGES TO EQUIPMENT TECHNICAL MANUALS



SOMETHING WRONG WITH THIS MANUAL?

THEN...JOT DOWN THE DOPE ABOUT IT ON THIS FORM, TEAR IT OUT, FOLD IT AND DROP IT IN THE MAIL!

FROM: (YOUR UNIT'S COMPLETE ADDRESS)

Commander
Stateside Army Depot
ATTN: AMSTA-US
Stateside, N.J. 07703

DATE 10 July 1975

PUBLICATION NUMBER

TM 11-5840-340-12

DATE

23 Jan 74

TITLE

Radar Set AN/PSC-76

BE EXACT...PIN-POINT WHERE IT IS

IN THIS SPACE TELL WHAT IS WRONG AND WHAT SHOULD BE DONE ABOUT IT:

PAGE NO.	PARA-GRAPH	FIGURE NO.	TABLE NO.
2-25	2-28		
3-10	3-3		3-1
5-6	5-8		
		FO3	

Recommend that the installation antenna alignment procedure be changed through to specify a 2° IFF antenna lag rather than 1°.

REASON: Experience has shown that with only a 1° lag, the antenna servo system is too sensitive to wind gusting in excess of 20 knots, and has a tendency to rapidly accelerate and decelerate as it hunts, causing strain to the drive train. Hunting is minimized by adjusting the lag to 2° without degradation of operation.

Item 5, Function column. Change "2 db" to "3db."

REASON: The adjustment procedure for the TRANS POWER FAULT indicator calls for a 3 db (500 watts) adjustment to light the TRANS POWER FAULT indicator.

Add new step f.1 to read, "Replace cover plate removed in step e.1, above."

REASON: To replace the cover plate.

Zone C 3. On J1-2, change "+24 VDC to "+5 VDC."

REASON: This is the output line of the 5 VDC power supply. + 24 VDC is the input voltage.

TEAR ALONG DOTTED LINE

TYPED NAME, GRADE OR TITLE, AND TELEPHONE NUMBER

SSG I. M. DeSpirito 999-1776

SIGN HERE:

SSG I. M. DeSpirito

DA FORM 2028-2
1 AUG 74

P.S.—IF YOUR OUTFIT WANTS TO KNOW ABOUT YOUR MANUAL "FIND" MAKE A CARBON COPY OF THIS AND GIVE IT TO YOUR HEADQUARTERS.

HISA 1686-75

RECOMMENDED CHANGES TO EQUIPMENT TECHNICAL MANUALS



SOMETHING WRONG WITH THIS MANUAL?

THEN...JOT DOWN THE DOPE ABOUT IT ON THIS FORM, TEAR IT OUT, FOLD IT AND DROP IT IN THE MAIL!

FROM: (YOUR UNIT'S COMPLETE ADDRESS)

DATE

PUBLICATION NUMBER

TM 11-5805-689-24P

DATE

17 Jul 78

TITLE

BE EXACT...PIN-POINT WHERE IT IS

IN THIS SPACE TELL WHAT IS WRONG AND WHAT SHOULD BE DONE ABOUT IT:

PAGE NO.	PARA-GRAPH	FIGURE NO.	TABLE NO.

TEAR ALONG DOTTED LINE

TYPED NAME, GRADE OR TITLE, AND TELEPHONE NUMBER

SIGN HERE:

FILL IN YOUR
UNIT'S ADDRESS

FOLD BACK

DEPARTMENT OF THE ARMY

OFFICIAL BUSINESS

PENALTY FOR PRIVATE USE, \$300

POSTAGE AND FEES PAID
DEPARTMENT OF THE ARMY
DOD-314



Commander
US Army Communications and
Electronics Materiel Readiness Command
ATTN: DRSEL-MA-Q
Fort Monmouth, New Jersey 07703

TEAR ALONG DOTTED LINE

FOLD BACK

FILL IN YOUR
UNIT'S ADDRESS

FOLD BACK

DEPARTMENT OF THE ARMY

OFFICIAL BUSINESS

PENALTY FOR PRIVATE USE, \$300

POSTAGE AND FEES PAID
DEPARTMENT OF THE ARMY
DOD-314



Commander
US Army Communications and
Electronics Material Readiness Command
ATTN: DRSEL-MA-Q
Fort Monmouth, New Jersey 07703

TEAR ALONG DOTTED LINE

FOLD BACK

By Order of the Secretary of the Army:

BERNARD W. ROGERS
General, *United States Army*
Chief of Staff

Official:

J.C. PENNINGTON
Brigadier General, United States Army
The Adjutant General

Distribution:

Active Army:

USAINSCOM (2)
COE(1)
TSG(1)
USAARENBD (1)
DARCOM (1)
TRADOC (2)
OS Maj Comd (4)
TECOM (2)
USACC (4)
MDW(1)
Armies (2)
Corps (2)
Svc Colleges (1)
USASIGS (5)
USAADS (2)
USAFAS (2)
USAARMS (2)
USAIS (2)
USAES (2)
USAICS (3)
MAAG (1)
USARMIS (1)
USAERDAA (1)

USAERDAIV (1)
Ft Monmouth (HISA) (33)
Fort Gillem (10)
Fort Gordon (10)
Fort Carson (5)
Fort Huachuca (10)
Ft Richardson (CERCOM) (2)
Army Dep (1) except
LBAD (14)
SAAD (30)
TOAD (14)
SHAD (3)
USA Dep (1)
Sig Sec USA Dep (1)
Units org under fol TOE:
(1 cy each UNOINDG)
11-35
29-16
29-26
29-36
29-134
29-207 (2)
29-610 (2)

NG: None

USAR: None

For explanation of abbreviations usdd. see AR 310-50.

